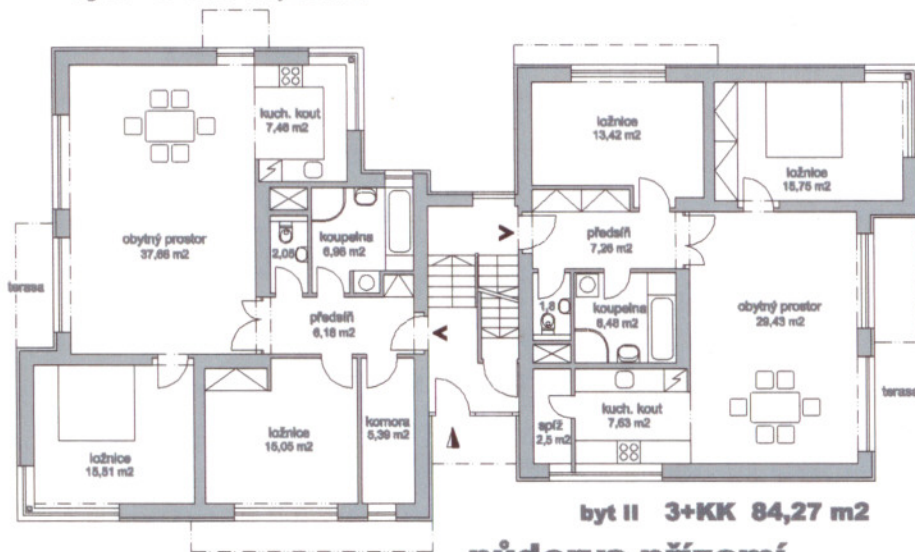


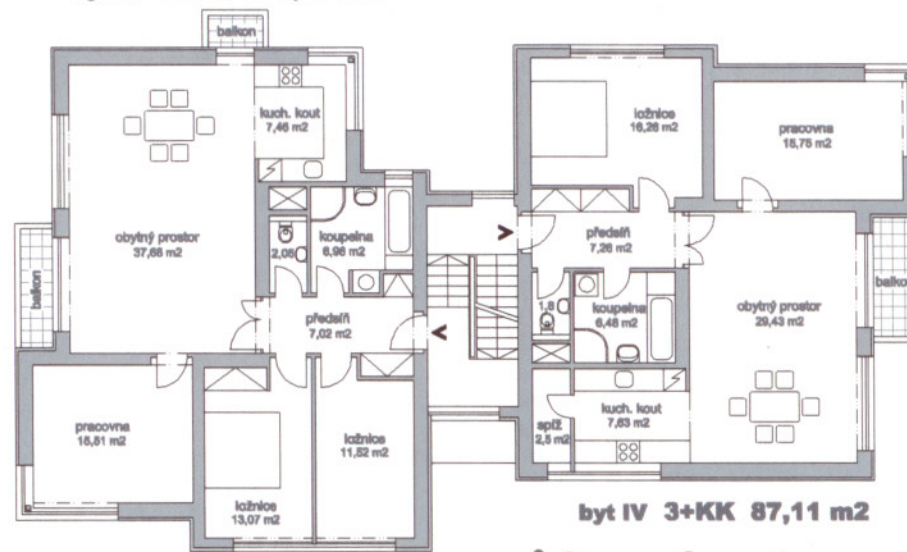
byt I 3+KK 96,28 m<sup>2</sup>



byt II 3+KK 84,27 m<sup>2</sup>

půdorys přízemí

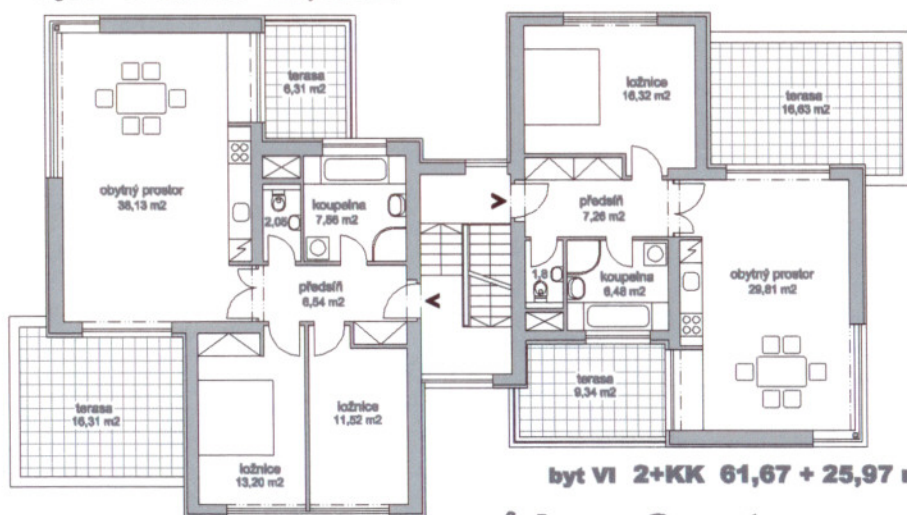
byt III 4+KK 101,27 m<sup>2</sup>



byt IV 3+KK 87,11 m<sup>2</sup>

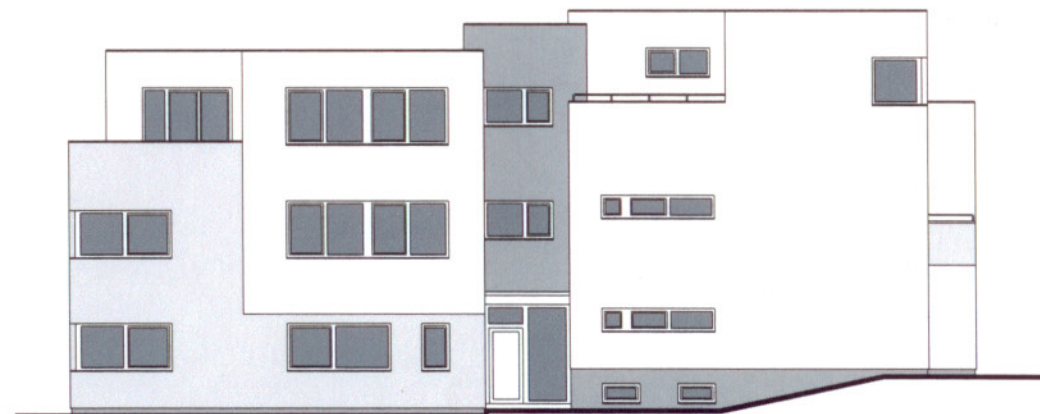
půdorys 1. patra

byt V 3+KK 79 + 22,62 m<sup>2</sup>



byt VI 2+KK 61,67 + 25,97 m<sup>2</sup>

půdorys 2. patra



pohled boční

schéma bytů  
m 1:200

DŮM "C"

VILADOMY  
Na Celně